

Advance Information in GCSE

Contents

Support for GCSE students in 2022	2
Modifications to the content and/or choices of topics	4
English Literature (AQA).....	4
Geography (OCR)	5
History (Edexcel)	6
Modifications made to the mode of assessment.....	7
Art & Design (AQA)	7
Summary of the advance information.....	7
English Language (AQA).....	7
Mathematics (Edexcel)	8
Combined Science: Trilogy (AQA).....	8
Separate Sciences	8
Biology (AQA)	8
Chemistry (AQA).....	9
Physics (AQA)	9
Business (AQA).....	9
Computer Science (OCR).....	10
Design & Technology (AQA).....	10
Food Preparation & Nutrition (AQA)	10
French (Edexcel)	11
Music (WJEC)	11
Physical Education (Edexcel)	11
Religious Studies (AQA).....	11
Spanish (Edexcel)	12

Support for GCSE students in 2022

Ofqual has published an overview of the support being provided for each qualification for students taking GCSEs in 2022. To view that overview, please click on the following link:

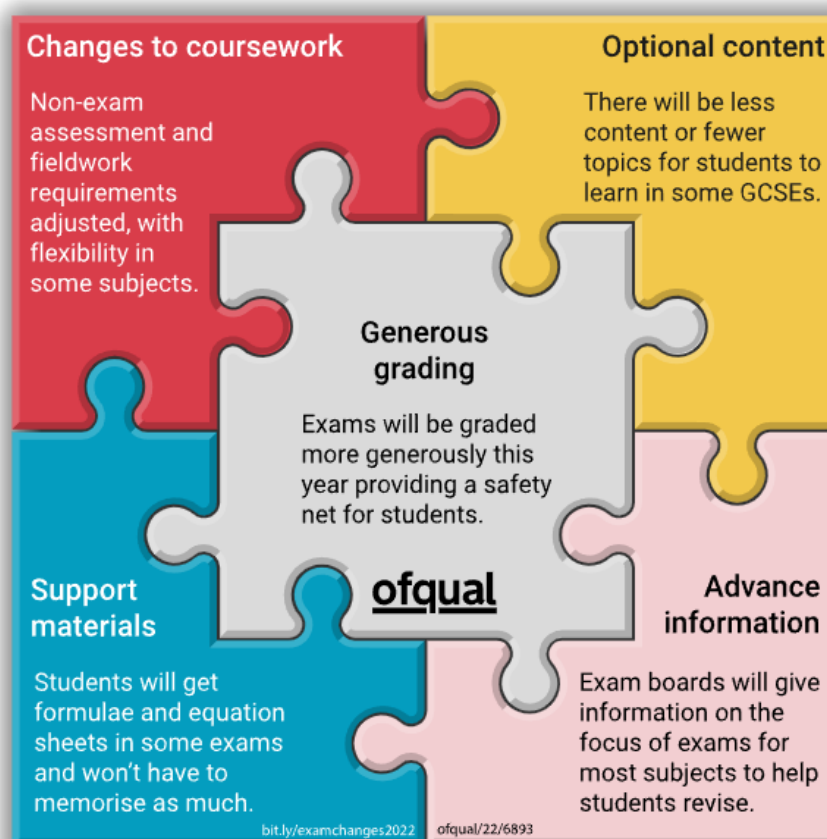
[Subject-by-subject support for GCSE, AS and A level students in 2022](#)

Ofqual outlines the following:

Additional support this year

A package of support has been put in place for students taking GCSE, AS and A level qualifications in summer 2022. It is intended to make sure that we are being as fair as possible to students given the disruption they have experienced, and many continue to face, due to the coronavirus pandemic.

Part of the changes includes [more generous grading this year](#) to provide a safety net for students who may have been impacted by the pandemic.



To view this postcard in its entirety, please click on the link below:

[Ofqual Advance Information Postcard](#)

Advance information might look different for different subjects because of how they are structured and assessed, but as far as possible the exam boards have made sure the approaches within a subject are the same.

[Return to Contents](#)

These changes apply in England and to Ofqual regulated qualifications taken elsewhere.

Exam boards have published specific information about the changes for each qualification they offer, you should check their websites for more information:

- [AQA](#)
- [OCR](#)
- [Pearson Edexcel](#)
- [WJEC Eduqas](#)

Modifications to the content and/or choices of topics

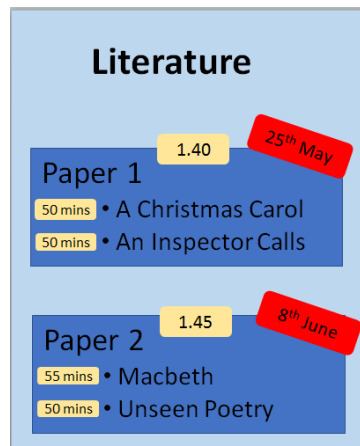
Within the following subjects, modifications have been made to the content and/or choices of topics within the scope of the examinations:

English Literature (AQA)

- **Choice of subject content:**
All students will be assessed on a Shakespeare play.
Schools and colleges can then choose two of the following three areas:
 - Anthology of poetry
 - Modern text
 - 19th-century novel.
- **Changes to exam structure:**

Paper 1 (choose any two)	Paper 2 (compulsory)
Paper 1P Anthology of poetry – 1 item 30 marks (AO1, AO2, AO3)	Section A Shakespeare – 1 item 30 marks (AO1, AO2, AO3) + 4 marks (AO4)
Paper 1N 19th-century novel – 1 item 30 marks (AO1, AO2, AO3)	Section B Part 1: unseen poem essay 24 marks (AO1, AO2) + 4 marks (AO4) Part 2: unseen poetry comparison 8 marks (AO2)
Paper 1M Modern prose/drama – 1 item 30 marks (AO1, AO2, AO3)	

At Mayflower High School:



- **Total marks and total exam time reduced:**
The total exam marks available has been reduced from 160 to 130.
The total exam time for GCSE English Literature has been reduced from 4 hours to 3 hours and 25 minutes.
- **No advance information on exams**
There will be no advance information on what exams will cover for GCSE English Literature.

Geography (OCR)

- Ofqual has confirmed that students taking Geography in summer 2022:
 - will not be asked questions during the exams in relation to their own fieldwork experience.
 - will still be asked questions during the exams on unfamiliar fieldwork contexts.
 - centres do not need to sign a fieldwork statement confirming that fieldwork has taken place on at least two occasions.
 - there will be optional topics for GCSE Geography.
 - there will be no advanced information for GCSE Geography (due to optionality).

Content overview	Assessment overview
Changing climate (mandatory) Distinctive landscapes (mandatory) Sustaining ecosystems (optional) Global hazards (optional) Resource reliance (optional) Fieldwork Geographical skills	<i>Our natural world (01)</i> 49 marks 1 hour written paper 31% of total GCSE
Urban futures (mandatory) Dynamic development (mandatory) UK in the 21st Century (mandatory) Fieldwork Geographical skills	<i>People and society (02)</i> 50 marks 1 hour written exam 31% of total GCSE
Geographical skills Decision making exercise * Indicates inclusion of synoptic assessment.	<i>Geographical exploration (03)*</i> 60 marks 1 hour 30 minutes written exam 38% of total GCSE

The table above indicates any changes, and these are explained here:

- The qualification total has changed from 200 to 159 marks.
- The component weightings have changed: Components 01 and 02 from 35% to 31% and Component 03 from 30% to 38%.
- The removal of own fieldwork questions from Components 01 and 02, equates to 15 marks.

At Mayflower High School:

- For Paper 01, *Our natural world*, from the optional elements, students will have the choice of either **Sustaining ecosystems** or **Global hazards**. We are **not** teaching the element of **Resource reliance**.
- For Paper 01, *Our natural world*, the type of unseen field work questions will focus on **rivers**.
- For Paper 02, *People and Society*, the type of unseen field work questions will focus on **urban**.

History (Edexcel)

Summary of the Summer 2022 content and assessment arrangements

- Students are assessed on three of the four components across three exam papers:
 - a compulsory Paper 3 Modern depth study;
 - plus two of the remaining three components;
 - Paper 1 Thematic study and historic environment,
 - Paper 2 Booklet P Period study, and
 - Paper 2 Booklet B British depth study.
- The total qualification raw mark is either 116 or 132 (depending on which three components are assessed), of which 4 marks are for spelling, punctuation, grammar and use of specialist terminology. Grade boundaries at qualification level will be determined depending on which three components are assessed – entries will be made to one of two specification codes, 1HIA (132 raw marks) and 1HIB (116 raw marks). An entry code calculator is available [here](#).
- The total assessment time is either 3 hours 10 minutes or 3 hours 30 minutes (depending on which three components are assessed).
- Students will sit the Period study and British depth study in separate examinations, not as one combined paper, with each paper having an examination time of 55 minutes.

2022 content options

Option 1

Paper 1 Thematic study with Historic environment	Paper 2 booklet B British depth study B1 A-S and Norman England B2 Richard I and John B3 Henry VIII and ministers B4 Early Elizabethan England	Paper 2 booklet P Period study P1 Spain and the 'New World' P2 British America P3 American West P4 Superpower Relations P5 Conflict in the Middle East	Paper 3 Modern depth study 30 Russia and Soviet Union 31 Weimar and Nazi Germany 32 Mao's China 33 The USA
---	--	---	--

Option 2

Paper 1 Thematic study with Historic environment 10 Crime and punishment 11 Medicine 12 Warfare 13 Migration	Paper 2 booklet B British depth study	Paper 2 booklet P Period study P1 Spain and the 'New World' P2 British America P3 American West P4 Superpower Relations P5 Conflict in the Middle East	Paper 3 Modern depth study 30 Russia and Soviet Union 31 Weimar and Nazi Germany 32 Mao's China 33 The USA
---	---	---	--

Option 3

Paper 1 Thematic study with Historic environment 10 Crime and punishment 11 Medicine 12 Warfare 13 Migration	Paper 2 booklet B British depth study B1 A-S and Norman England B2 Richard I and John B3 Henry VIII and ministers B4 Early Elizabethan England	Paper 2 booklet P Period study	Paper 3 Modern depth study 30 Russia and Soviet Union 31 Weimar and Nazi Germany 32 Mao's China 33 The USA
---	--	--	--

At Mayflower High School:

- We have dropped the American West unit of Paper 2.
- Paper 2 will now only consist of Elizabeth I (Early Elizabethan England) in a 55-minute paper.
- No advance information will be given for the other topics, due to the dropping of a unit.

Modifications made to the mode of assessment

In the following subject, modifications have been made to the mode of assessment:

- Art & Design

Art & Design (AQA)

Students will only complete Component 1

- For GCSE Art and Design: Art, Craft and Design, Fine Art, Graphic Communication, Textile Design, 3D Design and Photography, students will complete **Component 1 (Portfolio)** only.
- This means that students won't need to start or complete Component 2.
- Component 1 will be marked out of 96 as usual.
- The assessment criteria in the specification remain the same.

Summary of the advance information

In the following subjects, the relevant exam boards have issued the advance information for assessments in the summer season of examinations in 2022:

English Language (AQA)

- Advance information has been provided for **Paper 2 (Writers' viewpoints and perspectives) only**.
- Advance information identifies the text types of the unseen reading sources in Section A and the text type required in the writing task of Section B.
To view the advance information, please click on the following link:

[Advance information June 2022: GCSE English Language \(8700\)](#)

- The focus of the June 2022 question papers will be as follows:

Paper 2: Writers' viewpoints and perspectives

Section A Reading	
Source A	Source B
21st century Autobiographical writing	19th century Essay

Section B Writing
Question 5
Article

- The Spoken Language assessment can be conducted by the teacher at any time during the course, and by virtual means.
- It can also take place in front of a single teacher who represents an "audience."

Mathematics (Edexcel)

- Advance information has been provided for all examined components.
 - The advance information has been given for each paper in each tier, and also collated for each whole tier.
 - For each exam paper, the advance information is grouped by broad theme and then topic, followed by an appropriate description of the topic.
 - Advance information provides a list of topics from the specification that will be assessed on each paper in specification content order, not in question paper order.
- To view the advance information, please click on the following link:**

[Mathematics Advance Information Version 2](#)

- Topics not explicitly given in the advance information may still be needed as prerequisite skills to solve questions.
- Formulae sheets will be provided as additional inserts for each examination paper, as part of the adaptations for 2022.

Combined Science: Trilogy (AQA)

- Advance information has been provided for all examined components for both Foundation and Higher tiers.
- Advance information provides a list of topics from the specification that will form the focus of the assessment on each paper, in specification order, not in question order.

To view the advance information, please click on the following link:

[Advance information June 2022: GCSE Combined Science: Trilogy \(8464\)](#)

- Topics not included on the list for assessment may still appear in low-tariff or linked-content questions.
- Students will still be expected to apply their knowledge to unfamiliar contexts.
- There will be a revised equation sheet for the GCSE Combined Science: Trilogy exam in summer 2022 which will cover all the physics equations required in the subject content.

Separate Sciences

Biology (AQA)

- Advance information has been provided for all examined components.
- Advance information provides a list of topics from the specification that will form the focus of the assessment on each paper, in specification order, not in question order.

To view the advance information, please click on the following link:

[Advance information June 2022: GCSE Biology \(8461\)](#)

- Topics not included on the lists for assessment may still appear in low-tariff or linked-content questions.
- Assessment of practical skills, mathematical skills and working scientifically skills will occur throughout all papers as usual.
- Students will still be expected to apply their knowledge to unfamiliar contexts.

Chemistry (AQA)

- Advance information has been provided for all examined components.
- Advance information provides a list of topics from the specification that will form the focus of the assessment on each paper, in specification order, not in question order.

To view the advance information, please click on the following link:

[Advance information June 2022: GCSE Chemistry \(8462\)](#)

- Topics not included on the lists for assessment may still appear in low-tariff or linked-content questions.
- Assessment of practical skills, mathematical skills and working scientifically skills will occur throughout all papers as usual.
- Students will still be expected to apply their knowledge to unfamiliar contexts.

Physics (AQA)

- Advance information has been provided for all examined components.
- Advance information provides a list of topics from the specification that will form the focus of the assessment on each paper, in specification order, not in question order.

To view the advance information, please click on the following link:

[Advance information June 2022: GCSE Physics \(8463\)](#)

- Topics not included on the lists for assessment may still appear in low-tariff or linked-content questions.
- Assessment of practical skills, mathematical skills and working scientifically skills will occur throughout all papers as usual.
- Students will still be expected to apply their knowledge to unfamiliar contexts.
- There will be a revised equation sheet for the GCSE Physics exam in summer 2022 which will cover all the physics equations required in the subject content.

Business (AQA)

- Advance information has been provided for all examined components.
- Advance information provides a list of topics from the specification content that will be assessed on each paper, in specification order, not in question order.
- Advance information will identify the quantitative skills that will be assessed.

To view the advance information, please click on the following link:

[Advance information June 2022: GCSE Business \(8132\) – Version 2](#)

- Topics not included on the list may still be assessed in synoptic questions.

Computer Science (OCR)

- Advance information has been provided for Component 1 (Computer systems) only.
- Advance information provides a list of topics from the specification that will be a part of the assessment.
- The topics are listed in specification order, not in question order.
- To view the advance information, please click on the following link:

[Advance Information for Summer 2022: GCSE Computer Science \(J277\)](#)

- Topics not included in the list may still be assessed at a range of tariffs (marks), including synoptic questions.

Design & Technology (AQA)

- Advance information has been provided for the examined component only.
- Advance information provides a list of topics from the specification content that will be assessed on the paper, in specification order, not in question order. The higher tariff questions will draw on these topics.

To view the advance information, please click on the following link:

[Advance information June 2022: GCSE Design and Technology \(8552\)](#)

- Topics not included on the list may still be assessed, mainly in lower tariff, multiple choice or synoptic questions.
- Advance information will not be provided for questions assessing the use of mathematical skills.

Food Preparation & Nutrition (AQA)

- Advance information has been provided for the examined component only.
- Advance information provides a list of topics from the specification content that will be assessed on the paper, in specification order, not in question order. The higher tariff questions will draw on these topics.

To view the advance information, please click on the following link:

[Advance information June 2022: GCSE Food Preparation and Nutrition](#)

- Topics not included on the list may still be assessed, mainly in lower tariff, multiple choice or synoptic questions.

French (Edexcel)

- **Advance information**
 - The advance information covers paper 4 (Writing). It covers questions 1, 2 and 3 on paper 4F and questions 1 and 2 on paper 4H (the writing questions).
To view the advance information, please click on the following link:

[Pearson Edexcel GCSE 9–1: French Advance Information](#)

- **Advance information FAQs**
 - Pearson Edexcel has also published a set of frequently asked questions (FAQs) about assessment in modern languages.
To view these FAQs, please click on the following link:

[GCSE and A level Modern Foreign Language advance information for summer 2022 assessments: FAQs](#)

Music (WJEC)

- The advance information covers Component 3 only.
To view the advance information, please click on the following link:

[GCSE Music \(C660QS\): Summer 2022 examinations - Advance Information](#)

- Written examination: 1 hour 15 minutes (approximately)
- This unit is assessed via a listening examination.
- Eight questions in total, two on each of the four areas of study.
 - Area of study 1: Musical Forms and Devices
 - Area of study 2: Music for Ensemble
 - Area of study 3: Film Music
 - Area of study 4: Popular Music

Physical Education (Edexcel)

- Advance information has been provided covering all examined components.
- The advance information has been provided separately for each paper and show the topics from the specification in the exam.
- This has been provided in specification order, not in question order.
To view the advance information, please click on the following link:

[Pearson Edexcel GCSE Physical Education: Advance Information](#)

- Other areas of content that are not listed may be tested in low mark tariff questions.

Religious Studies (AQA)

- Advance information has been provided for **Component 1: The study of religions** only.
- Advance information provides a list of topics from the specification content that will be assessed in the paper, in specification order, not in question order.
To view the advance information, please click on the following link:

[Advance information June 2022: GCSE Religious Studies A \(8062\)](#)

- Responses could draw upon other areas of specification content where relevant.

Spanish (Edexcel)

- **Advance information**

- The advance information covers paper 4 (Writing). It covers questions 1, 2 and 3 on paper 4F and questions 1 and 2 on paper 4H (the writing questions).

To view the advance information, please click on the following link:

[Pearson Edexcel GCSE 9–1: Spanish Advance Information](#)

- **Advance information FAQs**

- Pearson Edexcel has also published a set of frequently asked questions (FAQs) about assessment in modern languages.

To view these FAQs, please click on the following link:

[GCSE and A level Modern Foreign Language advance information for summer 2022 assessments: FAQs](#)