

Advance information in AS and A Level

Contents

Support for AS and A Level students in 2022.....	2
Summary of the advance information.....	4
Art & Design (AQA)	4
Biology (AQA).....	4
Business (AQA).....	4
Chemistry (AQA)	4
Computer Science (WJEC).....	5
Core Mathematics AS (Edexcel).....	5
Economics (OCR)	5
English Language & Literature (OCR)	6
English Literature (OCR)	6
French (Edexcel)	6
Geography (OCR)	7
History (Edexcel)	7
Law (AQA).....	7
Mathematics (Edexcel).....	8
Philosophy, Ethics & Theology (Religious Studies) (OCR).....	8
Physical Education (AQA)	8
Physics (AQA).....	8
Politics (Edexcel).....	9
Product Design (Design & Technology) (AQA)	9
Psychology (AQA)	9
Sociology (AQA).....	10
Spanish (Edexcel)	10

Support for AS and A Level students in 2022

Ofqual has published an overview of the support being provided for each qualification for students taking AS and A Level subjects in 2022. To view that overview, please click on the following link:

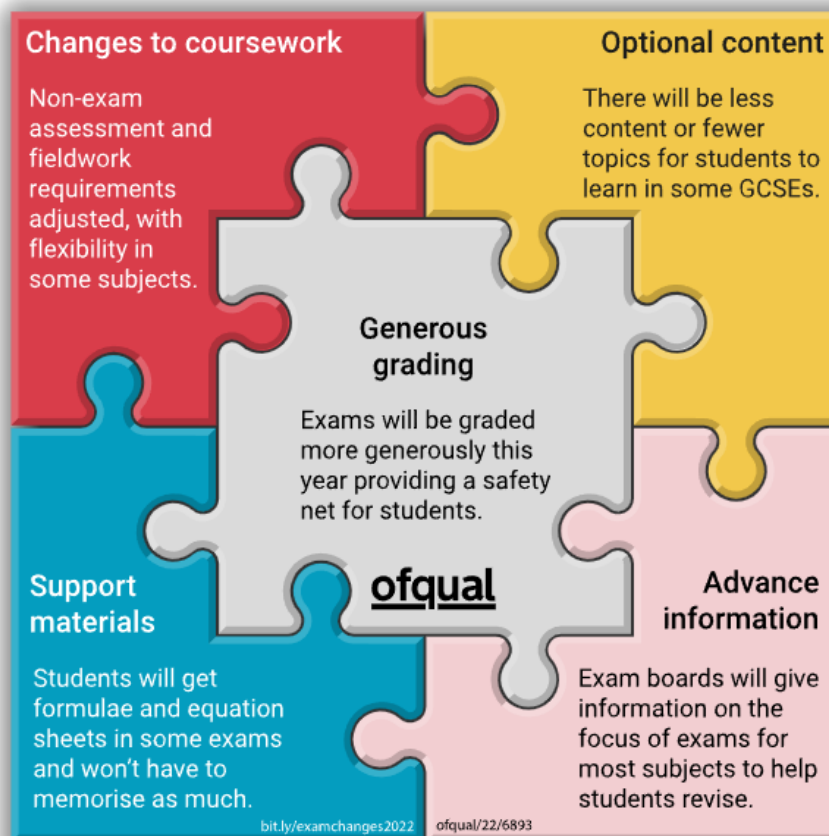
[Subject-by-subject support for GCSE, AS and A level students in 2022](#)

Ofqual outlines the following:

Additional support this year

A package of support has been put in place for students taking GCSE, AS and A level qualifications in summer 2022. It is intended to make sure that we are being as fair as possible to students given the disruption they have experienced, and many continue to face, due to the coronavirus pandemic.

Part of the changes includes [more generous grading this year](#) to provide a safety net for students who may have been impacted by the pandemic.



To view this postcard in its entirety, please click on the link below:

[Ofqual Advance Information Postcard](#)

Advance information might look different for different subjects because of how they are structured and assessed, but as far as possible the exam boards have made sure the approaches within a subject are the same.

[Return to Contents](#)

These changes apply in England and to Ofqual regulated qualifications taken elsewhere.

Exam boards have published specific information about the changes for each qualification they offer, you should check their websites for more information:

- [AQA](#)
- [OCR](#)
- [Pearson Edexcel](#)
- [WJEC Eduqas](#)

Summary of the advance information

In the following subjects, the relevant exam boards have issued the advance information for assessments in the summer season of examinations in 2022:

Art & Design (AQA)

Students will only complete Component 1

- For A-level Art and Design: Art, Craft and Design, Fine Art, Graphic Communication, Textile Design, 3D Design and Photography, students will complete **Component 1 (Personal investigation)** only.
- This means that students won't need to start or complete Component 2.
- Component 1 will be marked out of 96 as usual.
- The assessment criteria in the specification remain the same.

Biology (AQA)

- This advance information covers all examined components.
- For each paper, the list shows the major focus of the content of the examination; the topic areas are listed in rank order, with the areas carrying the highest mark allocations at the top of each list.
To view the advance information, please click on the following link:

[Advance information June 2022: A-level Biology \(7402\)](#)
- Topics not included on the list may still be assessed in low-tariff, multiple-choice or synoptic questions.
- Where a specific topic area includes questions directly linked to relevant practical skills/investigations, this will be indicated against the topic.

Business (AQA)

- This advance information covers all examined components.
- For each paper the list shows the major focus of the content of the exam.
To view the advance information, please click on the following link:

[Advance information June 2022: A-level Business \(7132\)](#)
- Topics not included on the list may still be assessed in synoptic questions.
- Advance information will identify the quantitative skills that will be assessed.

Chemistry (AQA)

- This advance information covers all examined components.
- For each paper, the list shows the major focus of the content of the examination; the topic areas are listed in rank order, with the areas carrying the highest mark allocations at the top of each list.
To view the advance information, please click on the following link:

[Advance information June 2022: A-level Chemistry \(7405\)](#)
- Topics not included on the list may still be assessed in low-tariff, multiple-choice or synoptic questions.
- Where a specific topic area includes questions directly linked to relevant practical skills/investigations, this will be indicated against the topic.

Computer Science (WJEC)

- The advance information:
 - applies to both examined components
 - provides a list of content from the specification (by section title and amplification) that will be assessed in each paper, in specification order not in question order.

To view the advance information, please click on the following link:

[GCE A Level Computer Science \(A500QS\) Summer 2022 examinations: Advance Information](#)

- Content not included in the list may still be assessed in low tariff and synoptic questions.

Core Mathematics AS (Edexcel)

- Advance information has been provided for all examined components.
- For each paper advance information provides a list of topic descriptions from the specification which will be assessed.
- Advance information has been grouped under each broad content area and presented in approximate specification content order, not in question order.

To view the advance information, please click on the following link:

[Pearson Edexcel Level 3 Certificate Mathematics in Context \(Core Mathematics\): Advance Information](#)

Economics (OCR)

- Advance information has been provided for all examined components.
- Advance information provides a list of topics from the specification that will be a part of the assessment.
- The topics are listed in specification order, not in question order.

To view the advance information, please click on the following link:

[Advance Information for Summer 2022 A Level Economics \(H460\)](#)

- Topics not included in the list may still be assessed at a range of tariffs (marks), including multiple choice and synoptic questions.
- Advance information will provide the focus of quantitative skills for each component.

English Language & Literature (OCR)

- Advance information has been provided for Section A of Component 1 (Exploring non-fiction and spoken texts) and Component 2 (The language of poetry and plays).
- Advance information provides a reduced list of anthology texts and a reduced list of poems on which the assessment will be based.
- The poem(s)/text(s) included in the exam paper has been taken from this reduced list. Candidates may draw on their knowledge of other poems in the full collection to support their answer.

To view the advance information, please click on the following link:

[Advance Information for Summer 2022 A Level English Language and Literature \(H474\)](#)

English Literature (OCR)

- Advance information has been provided for examined Component 1 (Drama and poetry pre-1900), Section 1, Part a, only.
- Advance information indicates the act from which the extract to be assessed is taken.

To view the advance information, please click on the following link:

[Advance Information for Summer 2022 A Level English Literature \(H472\)](#)

French (Edexcel)

- Advance information has been provided for:
 - Paper 1 (Listening, Reading and Translation);
 - Paper 2 (Translation section only); and
 - Paper 3, Task 1 (Speaking, Discussion on a theme).
- Advance information indicates the theme, sub-theme and aspect targeted by the relevant sections in Papers 1, 2 and 3.
- The advance information has been presented in specification order, not in question order.

To view the advance information, please click on the following link:

[Pearson Edexcel GCE French: Advance Information](#)

- **Advance information FAQs**
 - Pearson Edexcel has also published a set of frequently asked questions (FAQs) about assessment in modern languages.

To view these FAQs, please click on the following link:

[GCSE and A level Modern Foreign Language advance information for summer 2022 assessments: FAQs](#)

Geography (OCR)

- Advance information has been provided for all examined papers.
- Advance information lists the content assessed by exams and the information includes the key ideas and bullet points within the specification and skills from the Geographical Skills appendix.
- The topics have been listed in approximately specification order and not in question order.
- The advance information provides notice of the topic areas targeted by the synoptic assessment in paper 3 (Geographical debates).

To view the advance information, please click on the following link:

[Advance Information for Summer 2022 A Level Geography \(H481\)](#)

- Ofqual has confirmed that students taking A Level Geography in summer 2022 will:
 - still be required to complete the non-exam assessment (NEA)
 - have greater flexibility in their use of primary data.
- Centres do **not** need to sign a fieldwork statement confirming that fieldwork has taken place over at least four days and in relation to processes in both physical and human geography.

History (Edexcel)

- Advance information has been provided for the following paper/sections only:
 - Paper 1: Bread study with interpretations – Sections A and B (C17th England Paper); Section C will have no advance information.
 - Paper 2: Depth Study – all of the paper will be provided with advance information (Russia Paper)
 - Paper 3: Themes in breadth with aspects in depth – Sections A and B will receive advance information (Tudor Rebellions Paper); Section C will have no advance information.
- The advance information has been provided separately for each paper.
- Advance information indicates the assessed specification content (bullet point level) in specification order, not in question order.

To view the advance information, please click on the following link:

[Pearson Edexcel Level 3 GCE History Advanced: Advance Information - Version 2](#)

Law (AQA)

- Advance information has been provided for all examined components.
- Advance information provides a list of topics from the specification that will be assessed on each paper, in specification order, not in question order. The higher tariff questions will draw on these topics.

To view the advance information, please click on the following link:

[Advance information June 2022: A-level Law \(7162\)](#)

- Topics not included on the list may still be assessed in low tariff, multiple choice or synoptic questions.

Mathematics (Edexcel)

- Advance information has been provided for all examined components.
- For each paper, advance information provides a list of topic descriptions from the specification which will be assessed.
- Advance information has been presented in approximate specification content order, not in question order.

To view the advance information, please click on the following link:

[Pearson Edexcel Level 3 GCE Mathematics Advanced: Advance Information](#)

- Topics not explicitly given in the advance information may still be assessed in low tariff items or synoptic questions.

Philosophy, Ethics & Theology (Religious Studies) (OCR)

- Advance information has been provided for all examined components.
- Advance information provides a list of topics from the specification that will be a part of the assessment. The topics have been listed in specification order, not in question order.

To view the advance information, please click on the following link:

[Advance Information for Summer 2022 A Level Religious Studies \(H573\)](#)

Physical Education (AQA)

- Advance information has been provided for all examined components.
- Advance information provides a list of topics from the specification content that will be assessed on each paper, in specification order, not in question order.

To view the advance information, please click on the following link:

[Advance information June 2022: A-level Physical Education \(7582\)](#)

- Topics not included on the list may still be assessed in low-tariff, multiple-choice or synoptic questions.

Physics (AQA)

- This advance information covers all examined components.
- For each paper, the list shows the major focus of the content of the examination; the topic areas are listed in rank order, with the areas carrying the highest mark allocations at the top of each list.

To view the advance information, please click on the following link:

[Advance information June 2022: A-level Physics \(7408\)](#)

- Topics not included on the list may still be assessed in low-tariff, multiple-choice or synoptic questions.
- Where a specific topic area includes questions directly linked to relevant practical skills/investigations, this will be indicated against the topic.

Politics (Edexcel)

- Advance information has been provided for the following papers/sections only:
 - Paper 1 UK Politics
 - Paper 2 UK Government – Section A
 - Paper 3 Comparative Politics (both options).
- The advance information has been provided separately for each paper.
- For each paper, the content areas from the specification has been listed in specification order not in question paper order.
- The content areas have been listed making reference to the subject content sub-sections in the specification, except for Paper 1 Section B Core political ideas, which indicates which core political ideas from the specification are being assessed.

To view the advance information, please click on the following link:

[Pearson Edexcel Level 3 GCE Politics Advanced: Advance Information](#)

- Topics not explicitly given in the advance information may still be assessed in synoptic questions

Product Design (Design & Technology) (AQA)

- This advance information covers all examined components.
- For each paper, the list shows the major focus of primarily the higher tariff questions.

To view the advance information, please click on the following link:

[Advance information June 2022: A-level Product Design \(7552\)](#)

- Topics not included on the list may still be assessed, mainly in lower tariff or synoptic questions.
- Advance information will not be provided for questions assessing the use of mathematical skills.

Psychology (AQA)

- Advance information has been provided for all examined components.
- Advance information provides a list of topics from the specification content that will be assessed in each paper, in specification order, not in question order.

To view the advance information, please click on the following link:

[Advance information June 2022: A-level Psychology \(7182\)](#)

- Advance information will not be provided for the assessment of research methods in any examined component.
- Content not listed in the advance information may still be applicable when responding to synoptic questions.

Sociology (AQA)

- Advance information has been provided for all examined components.
- Advance provides a list of topics from the specification content that will be assessed on each paper, in specification order, not in question order. The higher tariff questions will draw on these topics.

To view the advance information, please click on the following link:

[Advance information June 2022: A-level Sociology \(7192\)](#)

- Advance information will not be provided for the assessment of Methods in Context.
- Topics not included on the list may still be assessed in lower tariff or synoptic questions.

Spanish (Edexcel)

- Advance information has been provided for:
 - Paper 1 (Listening, Reading and Translation);
 - Paper 2 (Translation section only); and
 - Paper 3, Task 1 (Speaking, Discussion on a theme).
- Advance information indicates the theme, sub-theme and aspect targeted by the relevant sections in Papers 1, 2 and 3.
- The advance information has been presented in specification order, not in question order.

To view the advance information, please click on the following link:

[Pearson Edexcel GCE Spanish: Advance Information](#)

- **Advance information FAQs**
 - Pearson Edexcel has also published a set of frequently asked questions (FAQs) about assessment in modern languages.

To view these FAQs, please click on the following link:

[GCSE and A level Modern Foreign Language advance information for summer 2022 assessments: FAQs](#)